

# LAKE SOLIS



*The Ultimate Lake Retreat  
Phase II*

*Presented By*



YIASAS HOME

# IT BEGINS WITH A DREAM...

---

"I've yearned for a lake home for my **family** – a place to **escape** – to relax, renew, reconnect.

I'm creating **LAKE SOLIS** to be that place."



---

*Vincent Tan, Architect/Developer  
reflecting on his journey **home***



...FOR A PLACE WHERE  
SANCTUARY MEETS  
INNOVATION.

*your house,  
your way*

**Unique**

- Lake front property close to Chicago

**Exclusive**

- Just 24 homes on this private lake

**Custom**

- 5 Model floorplans, fully customizable

**Sustainable**

- Build with environment in mind

**Efficient**

- Both in term of energy and livability

**Affordable**

- Designed with your budget in mind,  
both at purchase and for years to come



*inquiries, please call*  
**877.322.1570**

Option A **Sand**

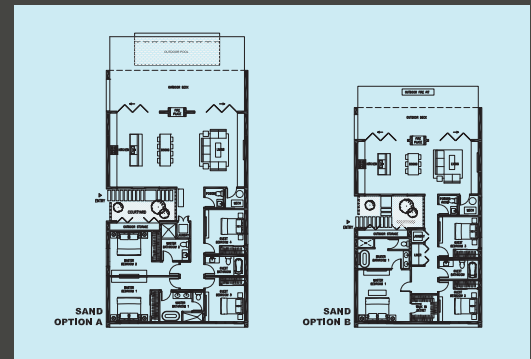
4 BED | 3.5 BATHS | 2800 SQ FT

Option B

3 BED | 2.5 BATHS | 1872 SQ FT



Floor *plan*

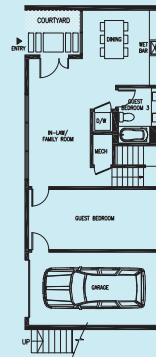


# Hilltop

4 BED | 3.5 BATHS | 3150 SQ FT



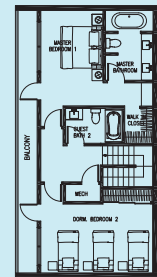
## Floor plan



**HILLTOP  
BASEMENT**



**HILLTOP  
1ST STOREY**



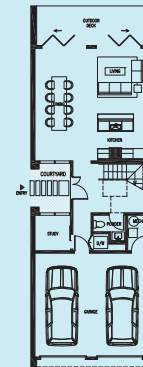
**HILLTOP  
2ND STOREY**

# Barn

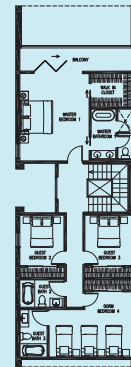
4 BED | 3 BATHS | 3490 SQ FT



## Floor plan



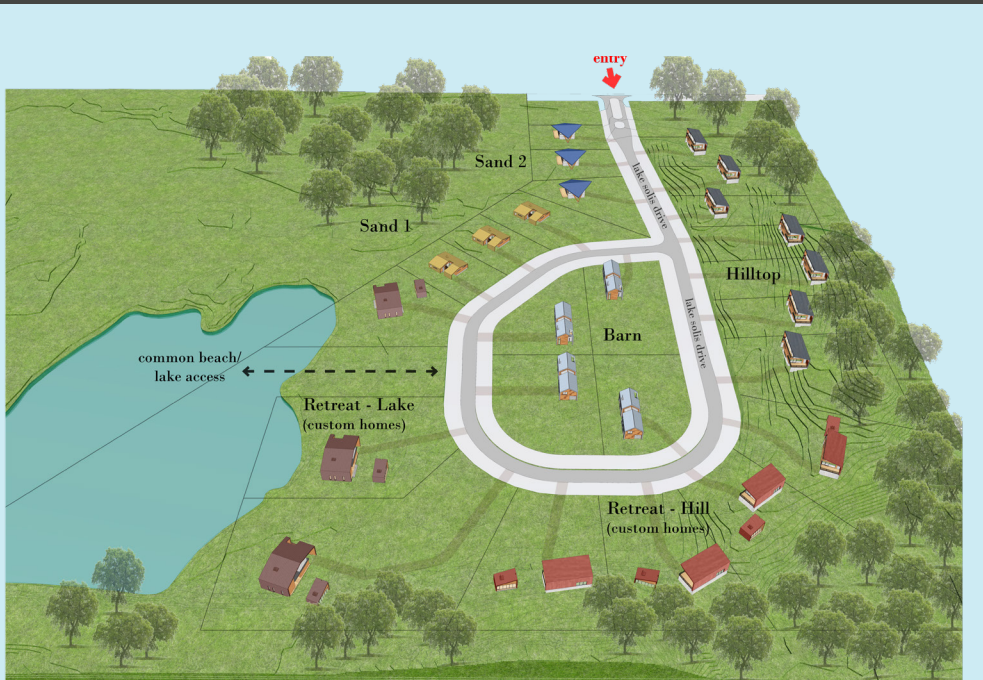
**BARN  
1ST STOREY**



**BARN  
2ND STOREY**

# Custom Home Sites

AVAILABLE



## Information

### Sand

Homes Starting at \$315,000 and \$490,000

### Hilltop

Homes starting \$551,000

### Barn

Homes starting at \$588,000

**Land Parcels Available, .5 acre average**

Starting at \$98,000

# LAKE SOLIS



*Where Moments Become **Memories***



YIASAS HOME

877.322.1570 | 790 W. Frontage Road Northfield, IL 60093 | [yiasashome.com](http://yiasashome.com) | Architrend, LLC

